

MARSH MASTER®

Making the Impassable Possible.



CONTENTS

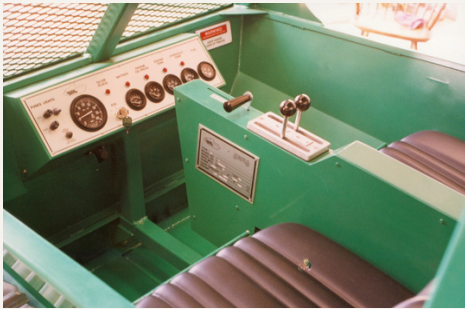
Coast Machinery, LLC

3	Our Story	Slick Sled™ Trailer	18
5	MM-2LX Specifications	Fire Suppression	19
6	Standard Options	Disc Harrows	20
7	Cutter	Crane	21
8	Roller Chopper	Prop Drive	22
9	Vegetation Blade	Geoprobe®	23
10	Spray Rig	Trailers	24
13	Backhoe	MM-2LX Accessories	25
14	Ditcher	Our Services	27
16	Anchor Master®	Marsh Master® Through the Decades	29
17	Slick Sled™	Contact Us	30

OUR STORY

It all started with getting to the ducks...

Meet the Marsh Master®



In 1971, John B. Coast, an avid duck hunter and a mechanical engineer with extensive machine design experience, was challenged by some fellow hunting partners in a duck lease south of Morgan City, LA to build a machine that could get them into hunting areas that were virtually inaccessible. John accepted the challenge and went to the drawing board.

In the summer of 1971, he designed and built a small marsh buggy that was used very successfully on that marsh property for several years.

In 1980 he realized that what he had learned over those years could be applied in the commercial market. After much thought, prayer and encouragement from others, his vision was realized.

Coast Machinery began production of the Marsh Master® amphibious marsh buggy; a lightweight, high flotation, aluminum marsh buggy with pontoons inside a rubber belt track system.

In July 1981, the first Marsh Master® Amphibious Marsh Buggy was delivered to an oilfield surveying company in Lafayette, LA. That machine is still in use today. Over the years, the basic design has been improved, refined, and expanded to include larger models as well as specialty attachments.

Making the impassable possible

*The most trusted name
in marsh machinery,
since 1980.*



**MARSH
MASTER®**

MM-2LX SPECIFICATIONS

Coast Machinery, LLC

LENGTH.....	15'10"
WIDTH.....	8'
HEIGHT.....	8'
GROUND CLEARANCE.....	32"
TRACK WIDTH.....	28"
ENGINE.....	74 HP KOHLER KDI2504TCR TURBOCHARGED DIESEL
TRANSMISSION.....	HYDROSTATIC
FINAL DRIVE.....	DIRECT DRIVE HIGH-TORQUE MOTOR
SPEED ON LAND.....	8 MPH
SPEED IN WATER.....	1 MPH
BODY.....	1/8" AND 3/16" ALUMINUM
WINCH.....	10,000 LB FRONT MOUNTED HYDRAULIC
OUTBOARD MOTOR / HYDRAULIC PROP DRIVE READY.....	YES
LOW FLOW AUX. TOOL CIR	3-8 GPM/3000 PSI
HIGH FLOW AUX. TOOL CIR	25-30 GPM/3000 PSI
WEIGHT.....	6110-6960 LBS (DEPENDING ON MODEL AND OPTIONS)
FLOATING LOAD CAPACITY.....	1800 LBS MAX (DEPENDING ON MODEL AND OPTIONS)
GROUND PRESSURE.....	APPROX. 1 PSI, MIN. ENVIRONMENTAL IMPACT
TRANSPORT.....	CAN BE TOWED WITH A PROPERLY EQUIPPED PICKUP TRUCK
THREE-POINT HITCH.....	YES

STANDARD OPTIONS

**Lexan
Shatter-
Proof
Windshield**

**2 Front
LED
Lights**

**Rearview
Window**

**2 Rear
LED
Lights**

**Lexan
Front
Winch
Window**

**Walking
Deck
Full Width
of Tracks**

**10,000 lb.
Hydraulic
Winch**





CUT WITH POWER

Capable of cutting vegetation and brush up to 3" in diameter.

The Marsh Master® has plenty of power and a custom engineered cooling and hydraulics package to get the job done.



CROSS-INDUSTRY CAPABILITY

Ideal for applications such as phragmites and cattail mowing, pipeline and right-of-way mowing, fire fighting, or land management applications in areas that limit the use of tractors, skid steers, or other types of mowing equipment.



COST EFFECTIVE

An environmentally-friendly alternative to herbicide applications or mowing operations in wetland areas inaccessible to non-amphibious equipment.



MM-2LX Attachment Specs

CUTTER

The MM-2LX cutter is a hydraulically driven, two spindle cutting unit that is designed specifically for wetland mowing applications. The cutter can be removed easily when not in use due to a very simple and reliable three point hitch system.

- **76" Cutting width**
- **3" Diameter material cutting capacity**
- **2 Cutting heads with 2 blades per head**
- **Powered off hydraulic system**



CONTROL THE INVASIVE

Ideal for invasive phragmites and cattail control, wetline creation in controlled burning operations, or creating open water waterfowl habitat.



FLATTEN AND CHOP

It attaches easily to the Marsh Master's 3-point hitch, which can be raised and lowered. The drum can be filled with water for extra crushing weight. It is extremely effective in standing water up to 3 ft. deep.



COST EFFECTIVE

An environmentally-friendly alternative to herbicide applications or mowing operations in wetland areas inaccessible to non-amphibious equipment.



MM-2LX Attachment Specs

ROLLER CHOPPER

The MM-2LX Roller Chopper provides a simple, low cost method that rolls and flattens grasses while tracking, creating a 8-foot open swath with each pass.

- **Mechanical drum type with greaseable bearings**
- **16" Drum with drain plug**
- **86" Drum width**



CONTROL THE INVASIVE

The blade is designed to effectively clear cattails and other invasive wetland plants that encroach into ponds, lakes, and drainage areas.



BUILD WATERFOWL HABITAT

Use it to create open water feeding and resting areas for ducks and geese.



ENVIRONMENTAL RESTORATION

Restore those ponds, lakes, and drainage canals that were once open water or free flowing to their natural state without the use of herbicides and without digging or excavating.



MM-2LX Attachment Specs

VEGETATION BLADE

The MM-2LX can be outfitted with a front mounted three point hitch and a vegetation blade.

- **Heavy-duty aluminum construction**
- **8' width, 3' height**
- **Designed to collect vegetation while allowing water to flow through**



CONTROL THE INVASIVE

This unit works extremely well for herbicide applications in areas inaccessible to conventional equipment.



FAST REFILL

The spray rig unit is equipped with a suction hose and strainer that can be simply dropped into any available water source for quick on-site tank filling.



DUAL PURPOSE SPRAYING

Comes standard with a hand gun or add the optional height-adjustable boomless nozzle system for spraying large acreage.



MM-2LX Attachment Specs

SPRAY RIG

The MM-2LX can be outfitted with either a hydraulic-driven or gas-driven 110 gallon bolt-on spray rig package for herbicide or pesticide applications.

- 110 gal. Poly tank
- HYPRO D-30 pump with 0-580 PSI control unit
- 15' Discharge hose with hand spray gun
- Optional adjustable boom with boom-less nozzles
- Optional hose reel

It's Called **MARSH**



MASTER[®] For a Reason





DEBRIS CLEARING

A great tool for breaking up beaver dams and clearing debris from waterways. Ideal for small wetland excavation jobs.



DO YOU DIG IT?

Easily attaches to our 3-point hitch system. Capable of a digging depth of 5.5 ft. Backhoe is powered by the standard auxiliary tool circuit.



COMPACT AND POWERFUL

Small but powerful, this compact unit is ideal for small wetland excavation jobs in tight places inaccessible by land-based equipment.



MM-2LX Attachment Specs

BACKHOE

The MM-2LX can be equipped with a hydraulic tractor backhoe.

- 18" Bucket - 2.78 cubic ft.
- 180 degree Bucket and ARC rotation
- 2,599 lb. Digging force
- Optional stationary thumb



DITCHING MADE EASY

It is capable of cutting up to a twenty-four-inch V-ditch and can cut up to 880-1,320 feet of uniform ditch per hour (footage may vary by depth or conditions).



CONTROL THE INVASIVE

This attachment is ideal for mosquito abatement or shallow channel creation projects.



BUILT TO LAST

With the make-up of an all steel construction, cast iron gearbox, hydraulic toplink, and a powder coat paint finish - it's quality that gets the job done.



MM-2LX Attachment Specs

DITCHER

The MM-2LX Ditcher is a hydraulically driven unit that is designed specifically for wetland applications.

- 880-1,320 ft/hr Digging speed
- 26" Max cutting depth
- 7" Bottom-of-ditch width
- 30 degree Digging angle

**RUGGED, RELIABLE,
AND READY FOR
ANY WETLAND
CHALLENGE.**





ANCHOR ANYWHERE

Capable of setting distribution or transmission anchors vertically and at desired angles employing 6,000 ft-lbs of torque (capable of twisting 1.5" square transmission anchors).



MULTI-PURPOSE MACHINE

Dual purpose attachment for installing guy wire anchors and ground rods in difficult-to-access wetland terrain.



SAVE TIME AND MONEY

Low-cost alternative to traditional access methods such as matting. Applies down pressure to the anchor and is much faster than a traditional digger derrick. Low ground pressure minimizes environmental impact.



MM-2LX Attachment Specs



ANCHOR MASTER®

(Patent # US 10,174,559 B1)

The MM-2LX Anchor Master® is a dual purpose attachment for transmission guy wire anchor and ground rod installation in difficult-to-access wetland terrain.

- **Powerful simultaneous linear and rotational force utilizing unique float function**
- **7'10" Ram travel**
- **90 degree Up/down; 25 degree left/right tilt**



THE SLICK SLED™ SOLUTION

The Slick Sled™, coupled with a Marsh Master®, is an innovative, environmentally low-impact transportation system that enables operators to comfortably and safely haul personnel and bulky materials/equipment up to 3,500 lbs.



CUSTOMIZE YOUR SLED

Seats, dump beds, hydraulic plumbing, etc. - your Slick Sled™ can be customized for your application.



SAFETY FIRST

The Slick Sled's™ wide surface area and flat-bottom design provides a very stable and comfortable ride for passengers, and gets the weight off of the tow vehicle and onto the sled.



MM-2LX Attachment Specs

SLICK SLED™

(Patent # US 10,464,383)



Safely haul personnel and equipment through marshy and wetland terrain with the Slick Sled™ and Marsh Master®.

- **Pivoting hitch**
- **3,500 lb. Hauling capacity**
- **Multiple d-rings in floor for load securement**
- **Optional seating up to 8 personnel**
- **Landing craft fold down transit to allow for loading or rolling stock**



MM-2LX Attachment Specs

SLICK SLED™ TRAILER

The Slick Sled™ can be towed on our custom hydraulic, power tilt-deck trailer. This trailer is designed specifically to unload and load the Slick Sled™ by the Marsh Master®.

- Galvanized frame for low-maintenance and long life
- Battery-powered tilt deck
- Dexter® maintenance-free torsion axles and electric brakes





FIRE SUPPRESSION SOLUTION

With the ability to carry water in the pontoons, the amphibious MM-2LX Fire Suppression Unit is ideal for controlled burns or wildfire suppression in marsh or swamp terrain inaccessible by other equipment.



PUT OUT THE FLAMES

Fire pump system delivers a maximum flow of 20 gpm at a distance of approximately 35 ft. Rapidly replenish the built-in 55 gallon water tanks within the pontoons with a suction hose that can draw water from any available on-site source.



MAKE A BREAK

Easily combined with hydraulic rotary cutter or roller chopper attachments to create fire breaks and wet lines.



MM-2LX Attachment Specs

FIRE SUPPRESSION

Equip your MM-2LX Marsh Master® with the Fire Suppression package for the ultimate solution for wetland and marsh fires.

- (2) - 55 gal. Aluminum water tanks built into pontoons
- Cab-mounted level gauge
- 20 gpm Maximum flow at a distance of approximately 35 ft.
- 15' 1 1/2 Suction hose for quick fill from water source



TURN SOME DIRT

Fully amphibious with the discs attached, this combo allows access to areas unreachable by conventional equipment.



BUILD IT AND THEY WILL COME

Use this attachment to make a food plot for waterfowl.



BUILT TO LAST

Unlike most discs that are painted or powder coated and will rust out, this implement is galvanized and will last a lifetime.



MM-2LX Attachment Specs

DISC HARROWS

The MM-2LX Disc Harrow attachment is ideal for soil prep to plant food for waterfowl or to create fire lines for controlled burning.

- 5-1/2' Disc size
- 66" Cutting width
- Galvanized frame type – 3" square tubing
- Maintenance free sealed bearings



DIG THE HOLE, SET THE POLE

This extremely versatile combination can perform augering (with additional digger unit) and distribution pole setting in wetlands, making it ideal for hard to access utility pole installation.



PICK AND LIFT

With a max reach of 19' 8" and max lifting capacity of 5,450 lbs. (at 6" outside pontoon), the crane is ideal for utility distribution maintenance. *Lifting capacity can vary depending on manufacturer.*



COMPACT AND COST EFFECTIVE

Low-cost alternative to traditional access methods such as matting or big steel pontoon marsh buggies. Towable with a properly equipped pickup, requiring no permitting or escorts.



MM-2LX Attachment Specs

CRANE

The MM-2LX equipped with a telescoping boom crane gives operators the ability to pick and transfer loads from a mobile, amphibious platform.

- Can perform augering, anchor setting, or lifting tasks
- Perfect for wetland terrain inaccessible by other equipment
- Capable of setting 45' wood utility poles



READY AND RELIABLE

Auxiliary prop drive for situations where the tracks aren't enough. Runs off aux. hydraulics requiring no fuel or spark.



LIGHTWEIGHT

For fast and easy installation/removal, the prop drive is receiver mounted, and can be stowed in the overhead rack. It is lightweight, only weighing 75 lbs.



ADD PROPULSION

Can ramp up to 10 hp output and propel the Marsh Master® up to 3 mph without aid of tracks. Features include tiller handle steering F-N-R shifter and a bolt-on protective ring around prop for added safety.



MM-2LX Attachment Specs

PROP DRIVE

(Patent # US 10,293,648 B2)

The MM-2LX can be equipped with our proprietary hydraulic powered prop drive and attaches to the Marsh Master® vehicle's hydraulic tool circuit with quick-connects.

- **10 hp Output**
- **Propels Marsh Master® buggy up to 3 mph**
- **Tiller handle with F-N-R shifter**
- **Fast and easy single pin installation and removal**



NO ROAD NO PROBLEM

Allows sampling in areas where traditional track carriers will sink out of sight.



WORK SAFE, WORK CLEAN

Work through a moonpool in the floor of the machine, keeping employees on the rig and out of the mud and water.



FAST AND EFFICIENT

Using Geoprobe's® lightweight undisturbed sampling technology, this unique combination is ideal for limited access, shallow sampling.



MM-2LX Attachment Specs

GEOPROBE®

The MM-2LX can be equipped with a Geoprobe® 540M for discrete soil sampling in wetland environments.

- 54" Stroke
- 345 ft/lb Rotation torque
- 18,000 lb Down force
- 25,000 lb Retraction force
- Capable of depths up to 60'

MM-2LX Attachment Specs

MM-2 STANDARD TRAILER

The MM-2LX can be towed on our custom tilt-deck trailer. This trailer is designed specifically for the MM-2LX, so it is a perfect fit.

- Galvanized frame for low-maintenance and long life
- Gravity-tilt with hydraulic dampening
- Dexter® maintenance-free torsion axles and Nev-R-Lube hubs with electric brakes
- Front-mounted access ladder



MM-2LX Attachment Specs

MM-2 XL TRAILER

The MM-2LX can be towed on our custom XL tilt-deck trailer. This trailer is designed specifically for the MM-2LX with multiple attachments.

- Galvanized frame for low-maintenance and long life
- Gravity-tilt with hydraulic dampening
- Dexter® maintenance-free torsion axles and Nev-R-Lube hubs with electric brakes
- Shown with optional access ladder designed for quick install or removal

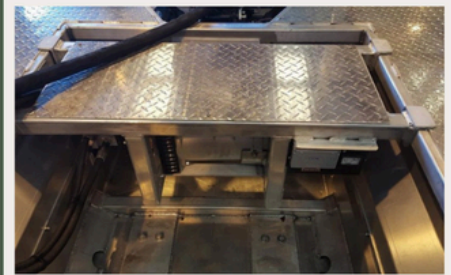
MM-2LX ACCESSORIES



WINCH CATWALK



DECK RAILING



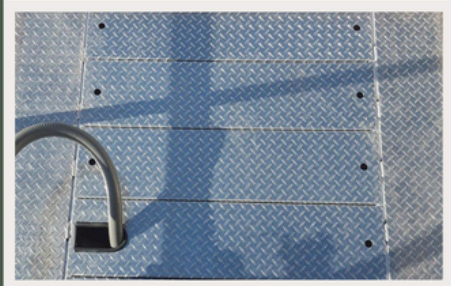
HYDRAULIC GENERATOR



BUGGY JACK

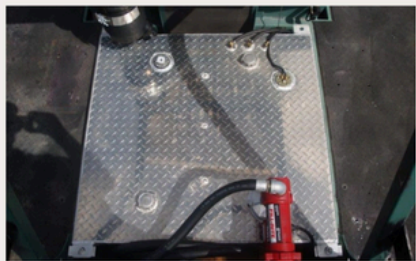


CARGO RACK



DECK INSERTS

...CONTINUED



AUX. FUEL TRANSFER TANK



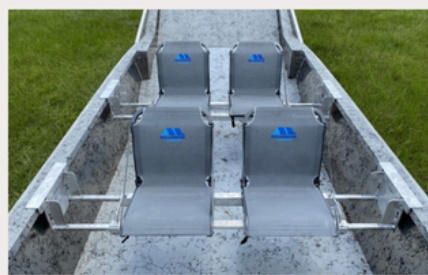
DECK LINER



REARVIEW CAMERA



MM-2LX REAR SEATS



SLICK SLED™ SEATS



FOLD-OUT WINDOWS

MAKING THE IMPASSABLE POSSIBLE...



RENTALS

Coast Machinery maintains a fleet of rental Marsh Master® vehicles ready for any job. Rental customers can pick up at our Baton Rouge facility, or we can schedule delivery to anywhere in the United States. Marsh Master® vehicles can be rented by the day, week, or month. We provide custom tilt-bed trailers, making it easily transportable with a properly equipped tow vehicle.



PARTS

Our dedicated parts department is here and ready to assist customers for their Marsh Master® parts' needs. No matter which year, make, or model - our parts team will be able to supply whatever part your Marsh Master® needs.

...WITH MARSH MASTER®



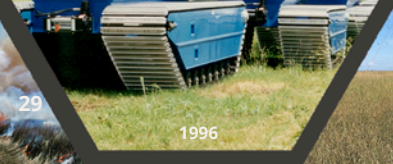
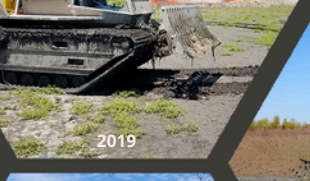
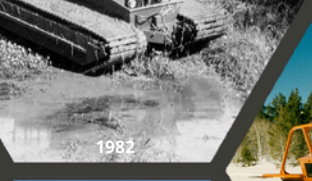
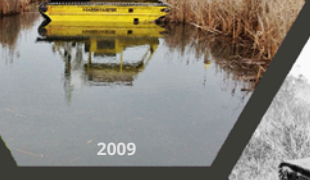
SERVICE

Marsh Master® amphibious vehicles are designed, engineered, fabricated and manufactured by Coast Machinery—and no one else can service it like the people who built it. If your Marsh Master® needs service, attachments, or accessories, our full-line service center is here for you.



PURCHASE

Coast Machinery has long been known for its direct approach to the market. The relationships built directly with customers allow for quicker response times, better support, and better understanding of the challenges faced.



Marsh Master[®]

Through the Decades

Marsh Master[®]

Contact Us

225-753-1323

Toll Free 1-800-827-5320

New Sales - John S. Coast

johns@marshmaster.com

Business Development - James Tabb

james@marshmaster.com

Rentals - Brett Sanchez

brett@marshmaster.com

Parts & Service - Paul McGrew

paul@marshmaster.com

www.marshmaster.com





WWW.MARSHMASTER.COM

225-753-1323 • 10012 UMBEHAGEN LN. BATON ROUGE, LA 70817